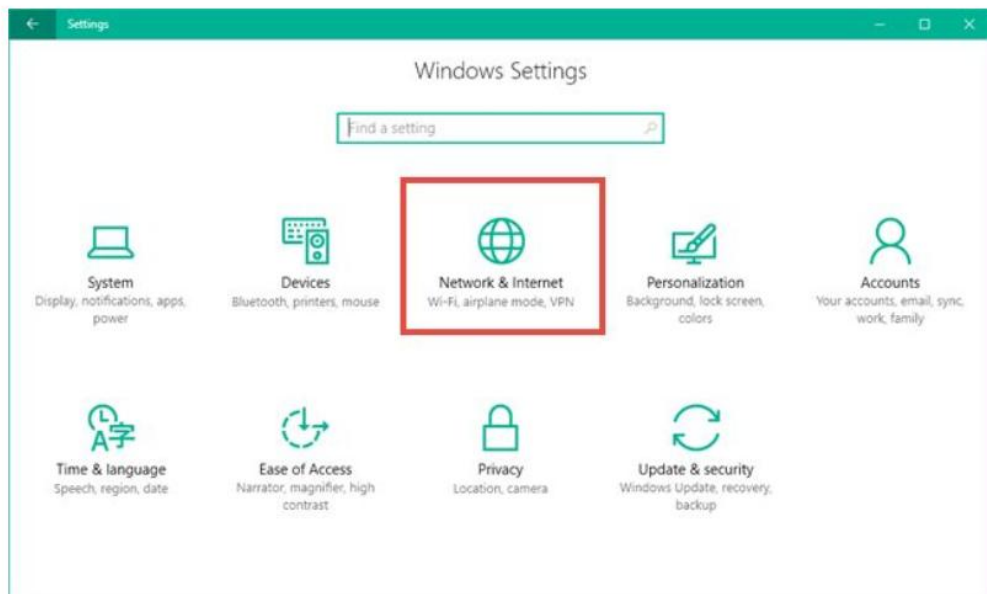
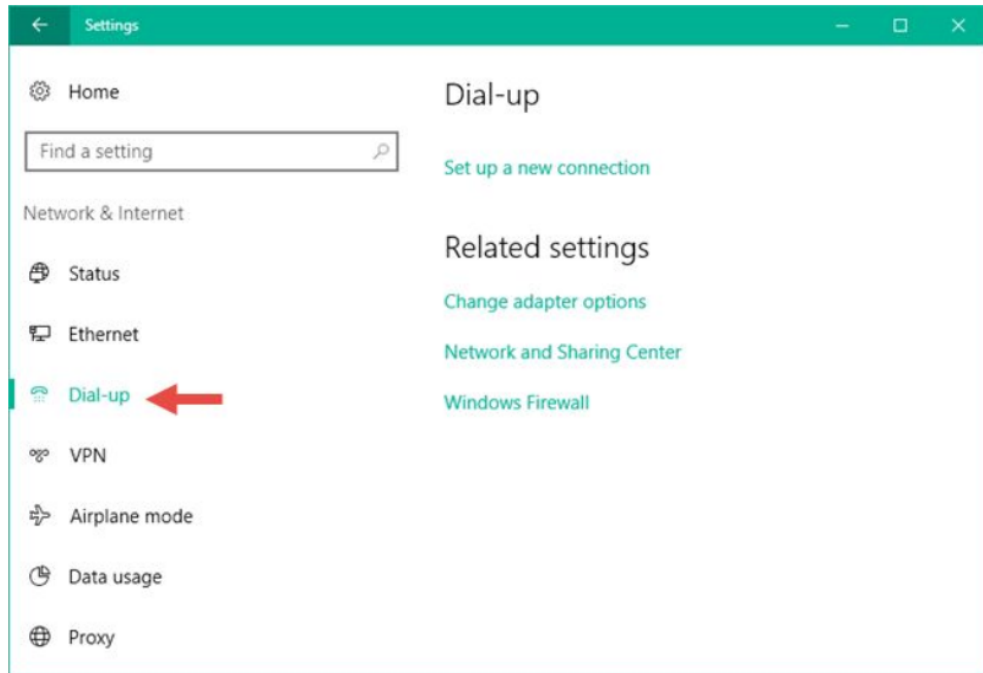




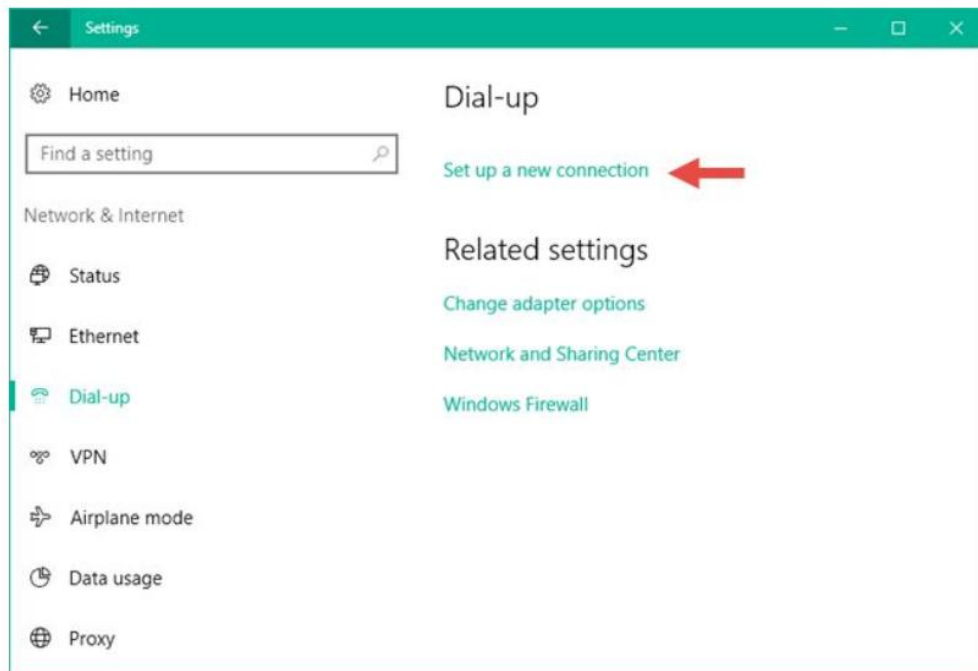
Inside *Settings* , head to the *Network & Internet* section.



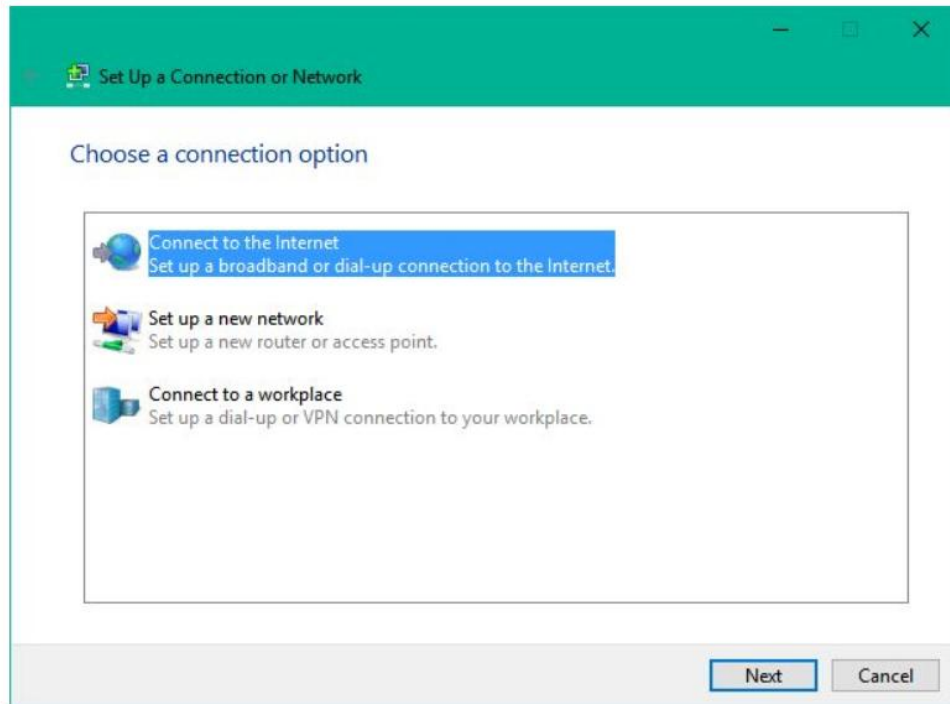
Then, select *Dial-up* from the list of options on the left.



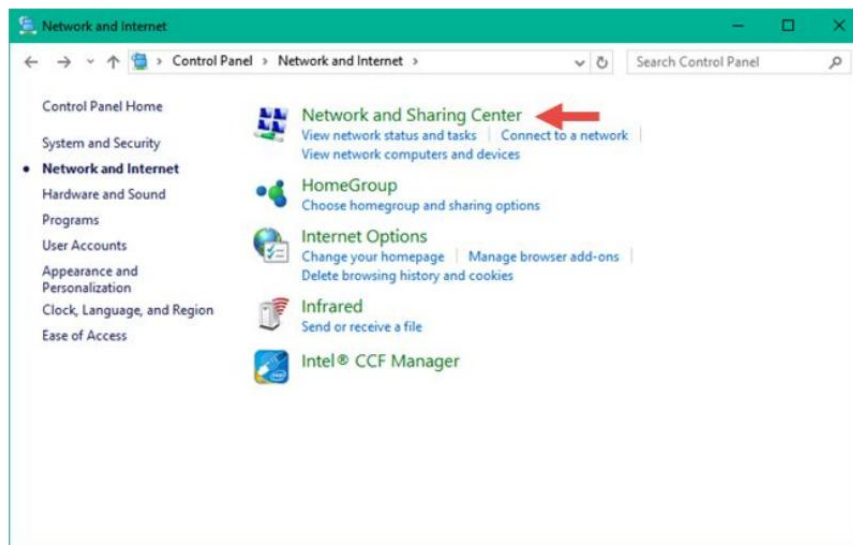
On the right side of the window, click or tap on the " *Set up a new connection*" link from the *Dial-*



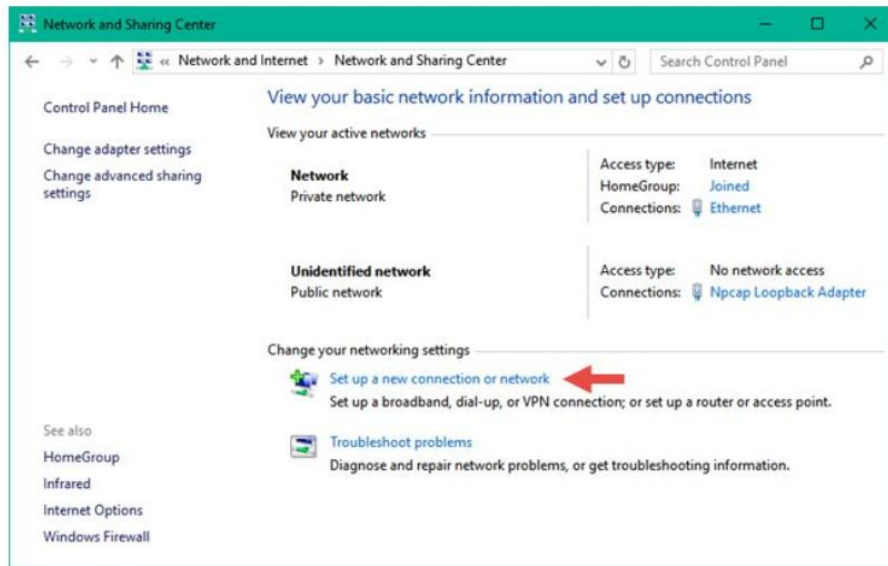
The "Set Up a Connection or Network" wizard opens.



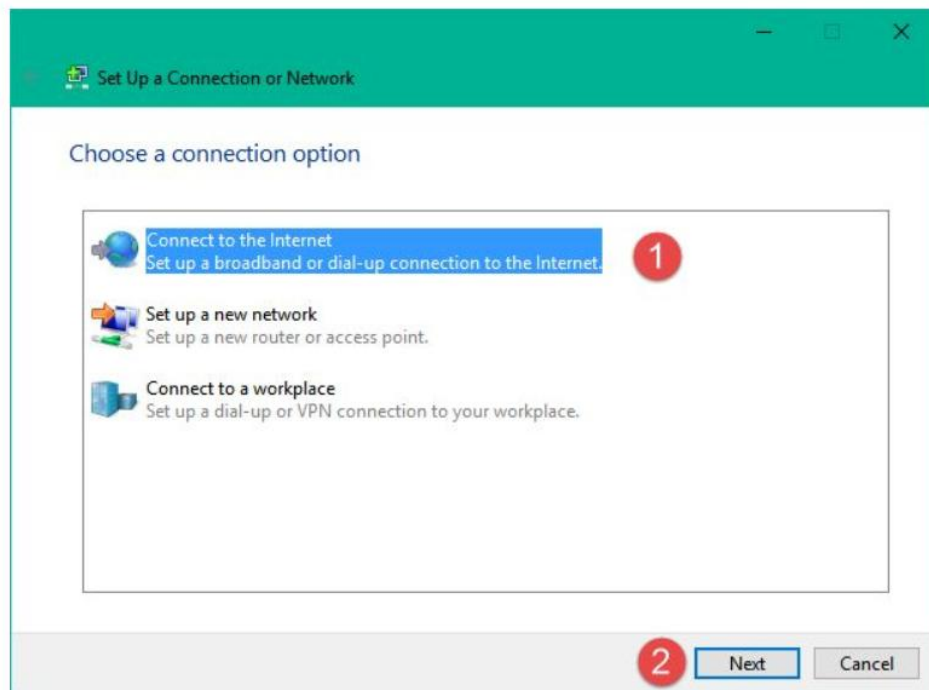
There is also another way of opening the "Connect to the Internet" wizard: by using the *Control Panel*. Open the *Control Panel* by following one of the methods we described here: [8 Ways to start the Control Panel in Windows 10](#). Then, open *Network and Internet*, and click or tap on the *Network and Sharing Center*.



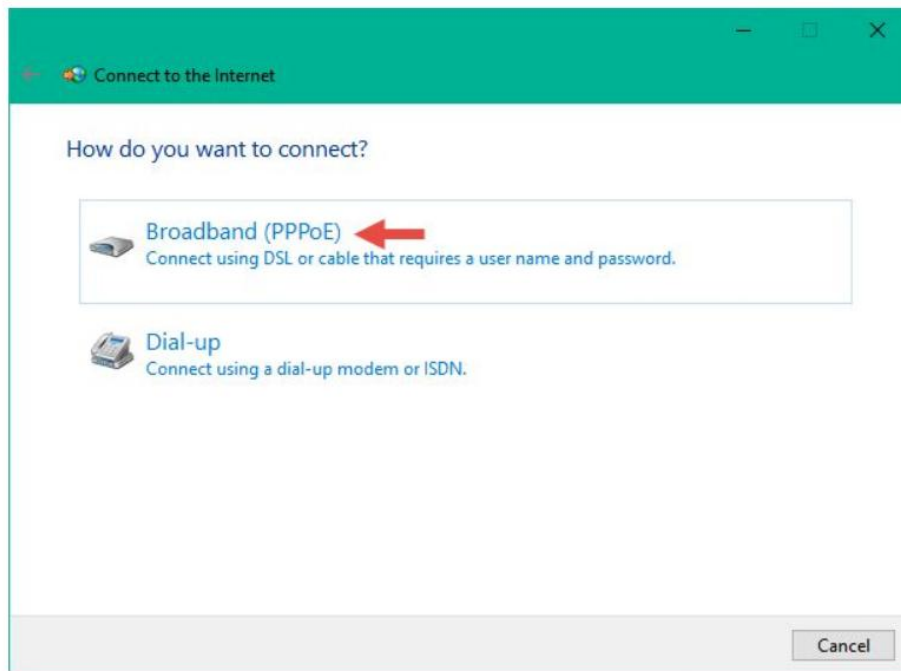
Here, click or tap on the " *Set up a new connection or network*" link, from the " *Change your networking settings*" section.



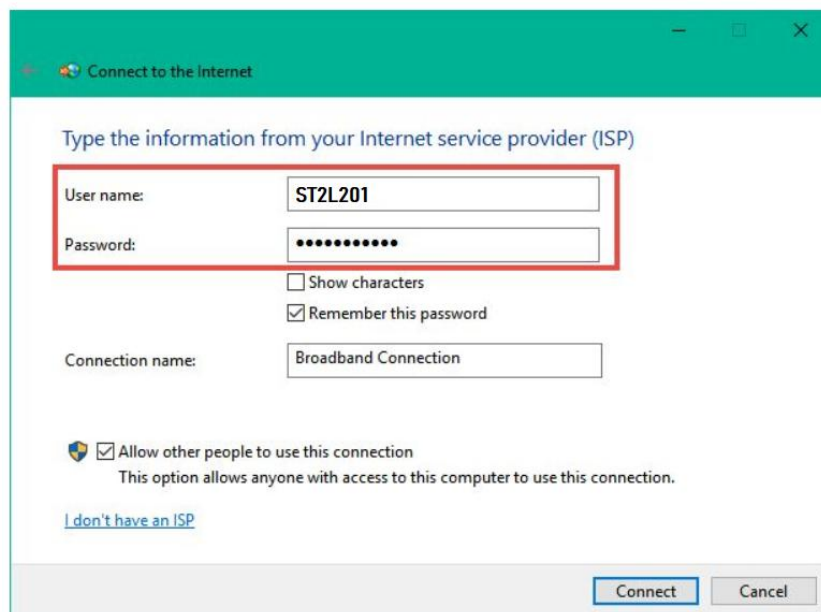
From the list of available connection options, select " *Connect to the Internet*" , and click or tap th button.



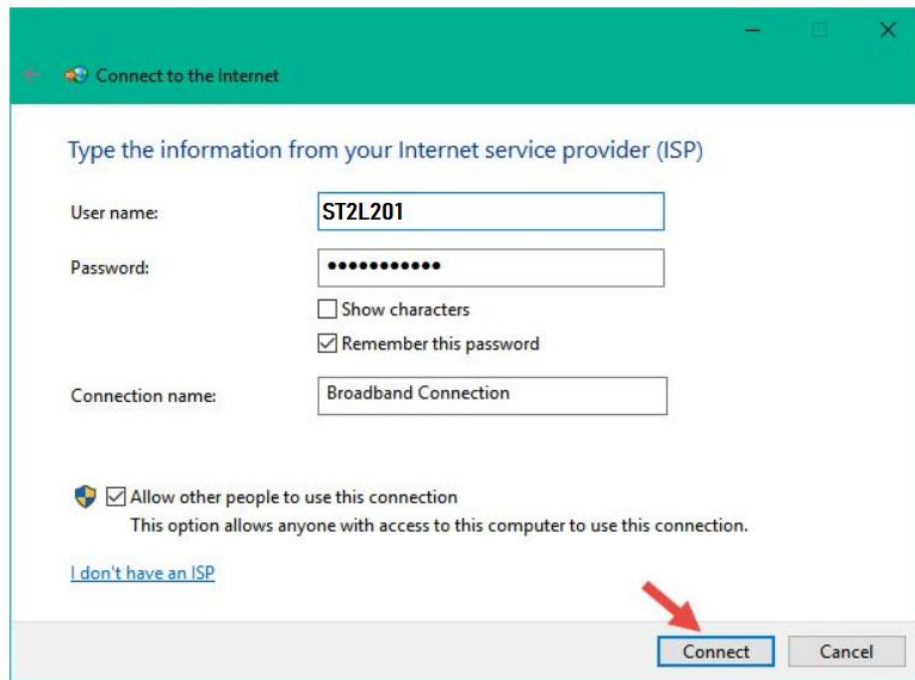
In the "Connect to the Internet" window, click or tap on *Broadband (PPPoE)*.



We've now arrived at the place where you provide the settings of your PPPoE connection. The most important things to do are to type the *User name* and *Password* given to you by your ISP.



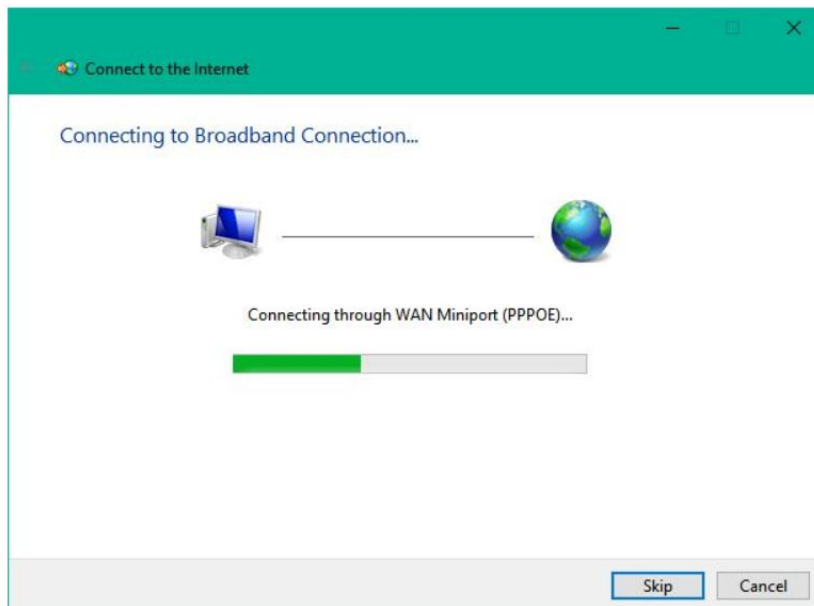
Once you've made all the settings, click or tap on *Connect* to initiate the PPPoE connection .



The screenshot shows the 'Connect to the Internet' wizard window. The title bar is green and contains the text 'Connect to the Internet'. The main content area is white and contains the following elements:

- Header: 'Type the information from your Internet service provider (ISP)'
- User name: 'ST2L201' (text input field)
- Password: '••••••••' (password input field)
- Options: Show characters, Remember this password
- Connection name: 'Broadband Connection' (text input field)
- Check for sharing: Allow other people to use this connection. This option allows anyone with access to this computer to use this connection.
- Link: [I don't have an ISP](#)
- Buttons: 'Connect' (highlighted with a red arrow) and 'Cancel'

The wizard will go through a few steps, like verifying your username and password and testing your internet connection.



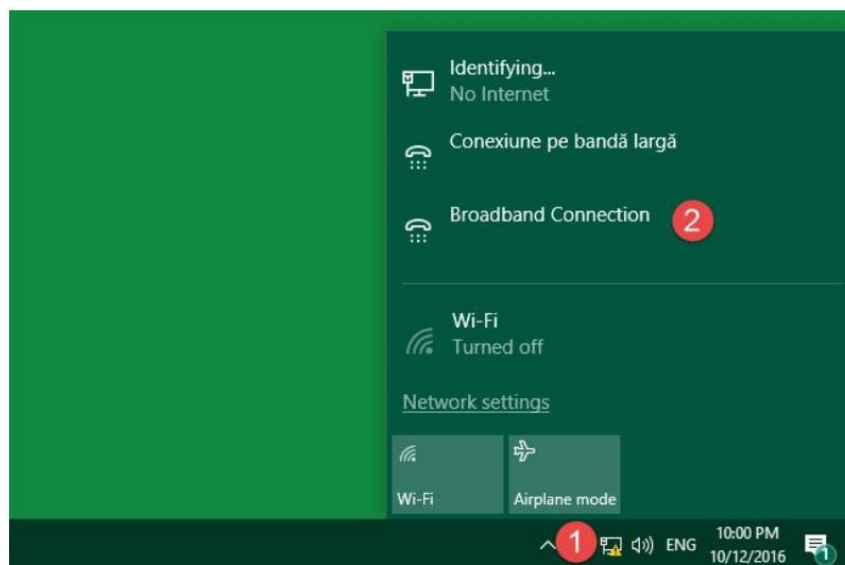
The screenshot shows the 'Connect to the Internet' wizard window in a progress state. The title bar is green and contains the text 'Connect to the Internet'. The main content area is white and contains the following elements:

- Header: 'Connecting to Broadband Connection...'
- Diagram: A computer icon connected to a globe icon by a horizontal line.
- Text: 'Connecting through WAN Miniport (PPPOE)...'
- Progress bar: A green bar indicating the progress of the connection.
- Buttons: 'Skip' and 'Cancel'

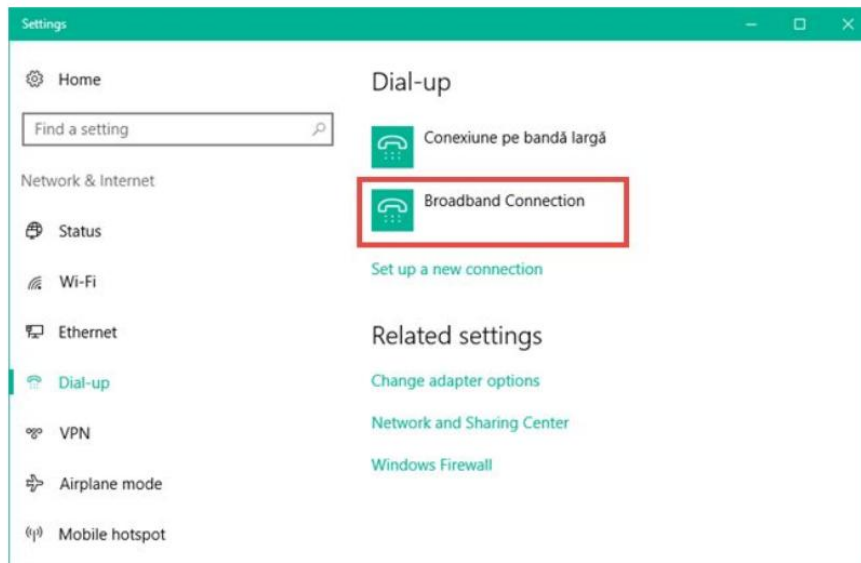
If everything worked well, the wizard will notify you that now *"The connection to the Internet is ready to use"*.



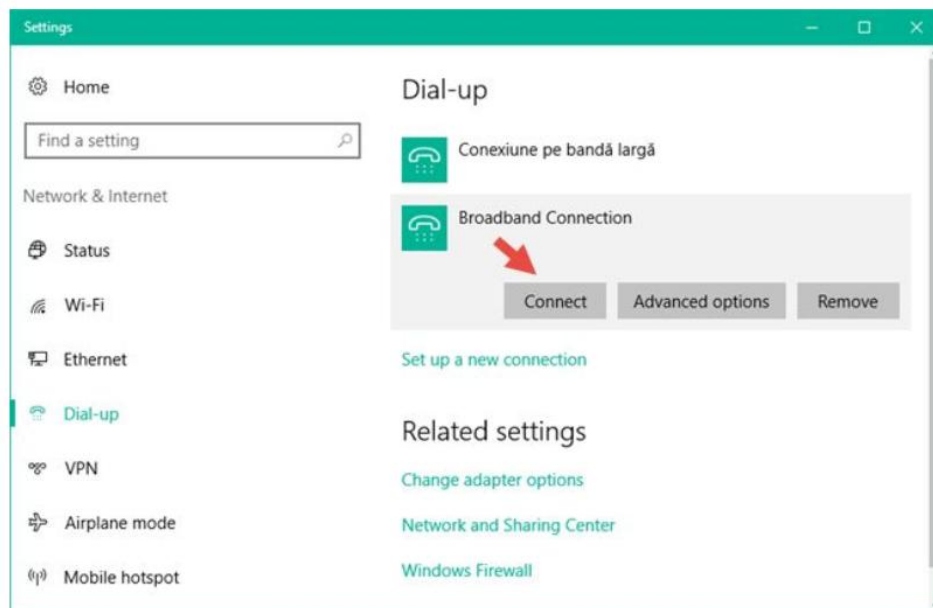
Click or tap on the *Network* icon from the notification area on your taskbar, and then click or tap on the PPPoE connection you want to connect to. If you didn't change its default name, the connection should be called *Broadband Connection*.



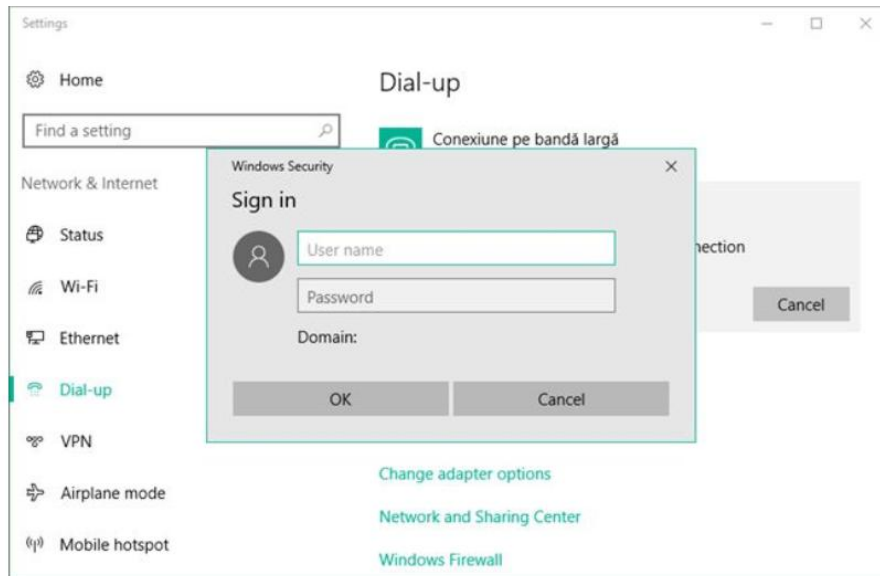
The previous action will trigger the launch of the *Settings* app and take you to the *Dial-up* section. In here, click or tap on your PPPoE connection, found on the right side of the window.



To initiate the PPPoE connection, click or tap on *Connect*.



If you asked Windows 10 to remember your PPPoE connection credentials when you've set the connection, then your computer will automatically connect to the internet. However, if you did not make that selection, you will now have to enter the username and password for the PPPoE connection.



Either way, once your Windows 10 computer is connected, you'll be brought back to the *Network & Internet* section of the *Settings* app. Here, you can see the *Connected* message displayed under your PPPoE connection.

